

Field Safety Notice (FSN1 REG-2018-0001-A)

Safety information concerning the sterEOS image review workstation

SUBJECT: Potential error in 3D projections when saving a pair of images after applying a horizontal flip

Dear Customers,

As part of our ongoing focus on the performance and safety of EOS imaging, we have identified a potential issue with the sterEOS image review workstation. 3D projections may be incorrect when a pair of images used are from a secondary capture generated from a series containing more than two images, where one of the images has been manually flipped.

This field safety notice aims to provide information concerning:

- The issue in question and the circumstances under which it may occur;
- The measures to be taken by the customer or end user to avoid any risk to patients or users;
- The actions proposed by EOS imaging to remedy the issue.

This document contains important information relating to the correct and safe use of the sterEOS image review workstation

Our records indicate that your establishment has received one or more products affected by this notice. Please note that only the product indicated above is concerned. No other EOS imaging products have been affected by this field safety notice.

If you identify one of the above-indicated products in your establishment, please read carefully and follow the measures to be taken by users.

- Please ensure that all potential users of the sterEOS workstations in your establishment are made aware of this communication and the recommended actions.
- Please save a copy of this field safety notice together with the instructions for use.

Description of the issue

When the operator applies a horizontal flip to an image belonging to a series of more than two images, the information relating to the symmetry is not correctly recorded when saved. This impacts the 3D calibration matrix used to display the projections of objects onto the images. Projection errors may lead to errors in the calculation of 3D clinical parameters when adjusting the position, size and shape of the 3D objects used.

Important notes:

- No injury resulting from this issue has been reported to EOS imaging.
- 2D measurements are not impacted.

You are not affected by this notice if:

- You do not use the 3D models from the sterEOS workstation;
- You never manually flip images;
- You never create more than two images in the same series using the EOS system;
- You exclusively EOS 3DServices for all of your 3D model needs.

Software versions affected

The issue concerns all sterEOS software versions.



EOS imaging SA

10, rue Mercoeur
75011 Paris France
+33 (0)1 55 25 60 60

EOS imaging, Inc.

185, Alewife Brook Parkway #205
Cambridge, MA 02138 USA
+1 (678) 564 5400

Corporate Information

Capital social : 202.887,64 €
N° TVA : FRO9 349 694 893

Potential dangers

Incorrect clinical parameters can be a contributing factor in incorrect clinical decisions, or sub-optimal surgical interventions.

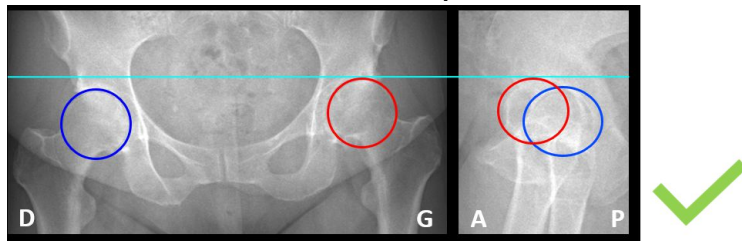
Measures to be taken by users

EOS system and sterEOS review workstation users are requested not to apply manual symmetry to an image before saving a 2D secondary capture if more than two images are displayed in the EOS "viewer" mode or in 2D sterEOS.

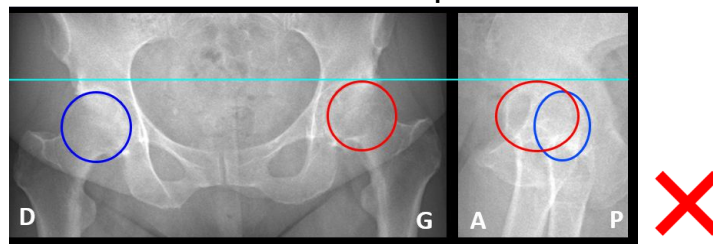
Users of the 3D sterEOS review workstation are requested to check that 3D projections associated with pelvic parameters match when a 3D image is created from a pair of images belonging to a series of more than two images:

- If the acquisition is indicated as "posteroanterior" on the lateral view, the circle representing the right acetabulum (blue) must be larger than the circle representing the left acetabulum (red).

Posteroanterior acquisition

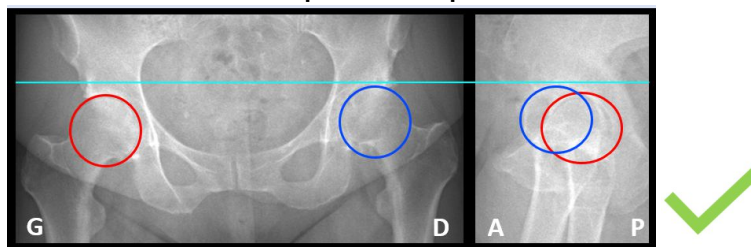


Posteroanterior acquisition

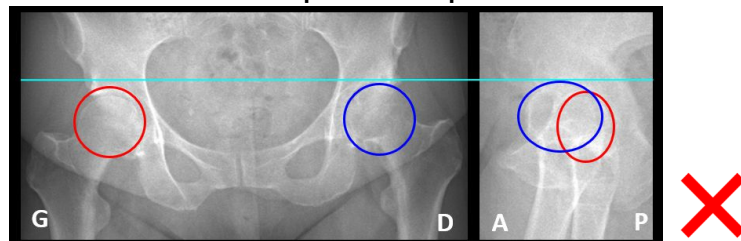


- If the acquisition is indicated as "anteroposterior" on the profile view, the circle representing the right acetabulum (blue) must be smaller than the circle representing the left acetabulum (red).

Anteroposterior acquisition



Anteroposterior acquisition



Corrective measures taken by EOS imaging

To eliminate any potential risk, a software upgrade of the sterEOS image review workstation will be sent in due course.

INSTRUCTIONS FOR END USERS:

- 1) Please read the field safety notice.
- 2) Follow the instructions provided in this field safety notice.
- 3) Please transfer this notice to whomever needs to be informed within your organization or in any organization to which the sterEOS review workstation may have been transferred.

INSTRUCTIONS FOR DISTRIBUTORS:

- 1) Please read the field safety notice.
- 2) Please transfer all the documentation relating to the field safety notice to your customers in the field and keep proof of delivery of this documentation. Please regularly submit your customers' response rate to EOS imaging by email (regulatory@eos-imaging.com). EOS imaging needs this proof to monitor the evolution of corrective measures.

Please accept our apologies for any inconvenience this may have caused. We thank you for your understanding and willingness to comply with these corrective measures. Rest assured that EOS imaging is monitoring this issue extremely closely to maintain a high level of safety and quality of its devices. If you have any questions, please contact your local EOS imaging representative.

We have duly informed the regulatory authorities worldwide.

Please pay attention to this notice. EOS imaging is committed to providing the highest quality products, and we apologize for any inconvenience that this field safety notice may cause. We thank you for your understanding concerning the decision and actions that we have taken to ensure patient safety and customer satisfaction. Please do not hesitate to contact us if you require assistance or further information.

Regards,



Bernard ISMAEL

Director of Quality and Regulatory Affairs

FSCA REG-2018-0001 - SA Consignee List
Status Report - August 1, 2018

Customer Code	Site name	Site Address	SterEOS serial Number	Sw Version[Software Release]
SAC162	Jeddah Scan Radiology Center	King's Road Tower King's Road, Jeddah	4.1503.392	1.6.4
			4.1503.399	1.6.4